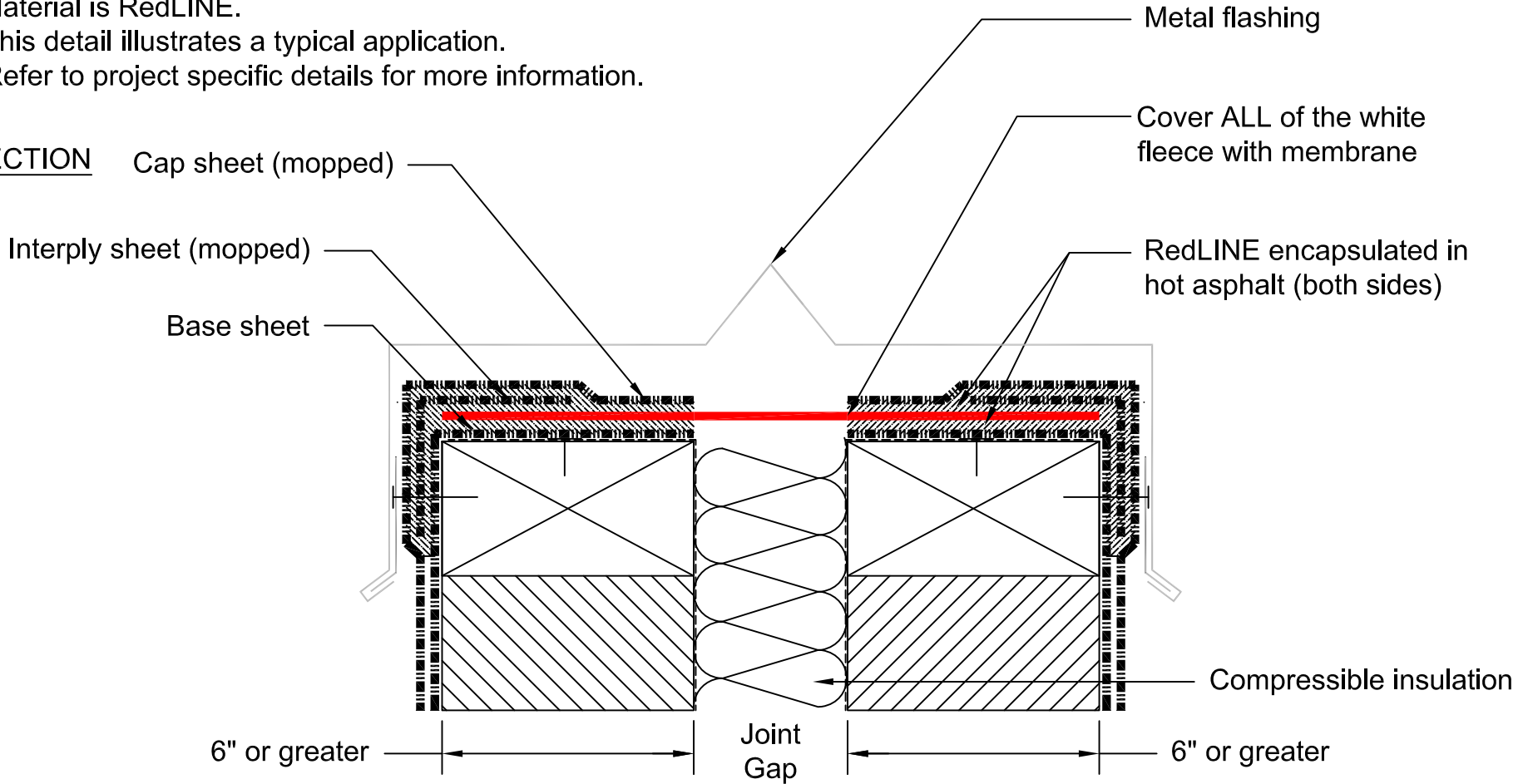


Notes

1. Material is RedLINE.
2. This detail illustrates a typical application.
Refer to project specific details for more information.

SECTION



DETAIL NAME:

RedLINE® Waterproof Expansion Joint installed into Mopped Modified Bitumen Membrane (Curb-to-Curb - Wide Curb)

DETAIL NUMBER:

RL-MMB-05

SCALE:

NTS

CHECKED BY:

SL

DATE:

01/01/17

SHEET:

1 of 1

APPROVALS AND SIGN OFFS

DESCRIPTION	DATE	SIGNED BY:
REVISION #1		
REVISION #2		
REVISION #3		
REVISION #4		
REVISION #5		

As a supplier of finished products only, SITURA INC., does not assume responsibility for errors in design, engineering or dimensions. The architect or owner's representative must verify all dimensions and suitability of details. RedLINE®, FlamLINE®, AqualINE® are registered trade marks of SITURA INC. © Copyright SITURA 2017.